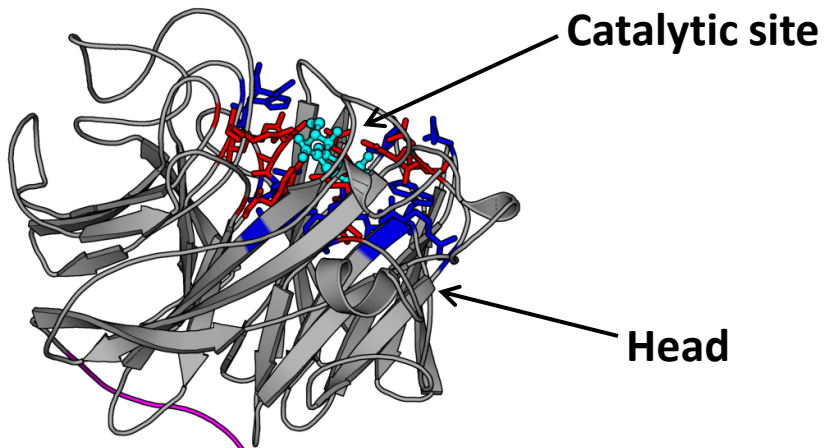


HK168 NA
1mer overview

DANA
Framework
Catalytic

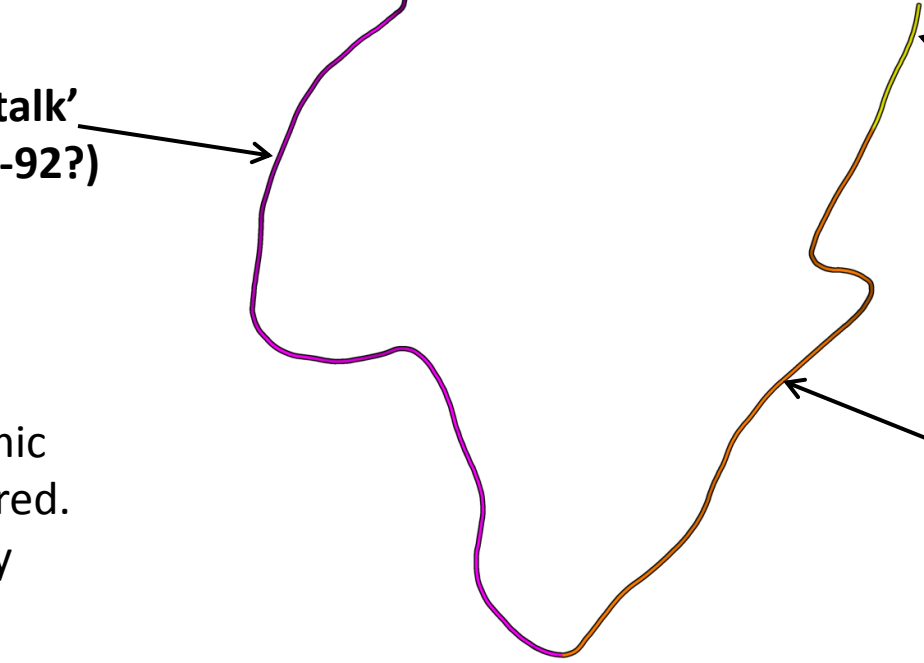


'Stalk'
(35-92?)

Cytoplasmic region
(1-6?)

Transmembrane helix
(7-34?)

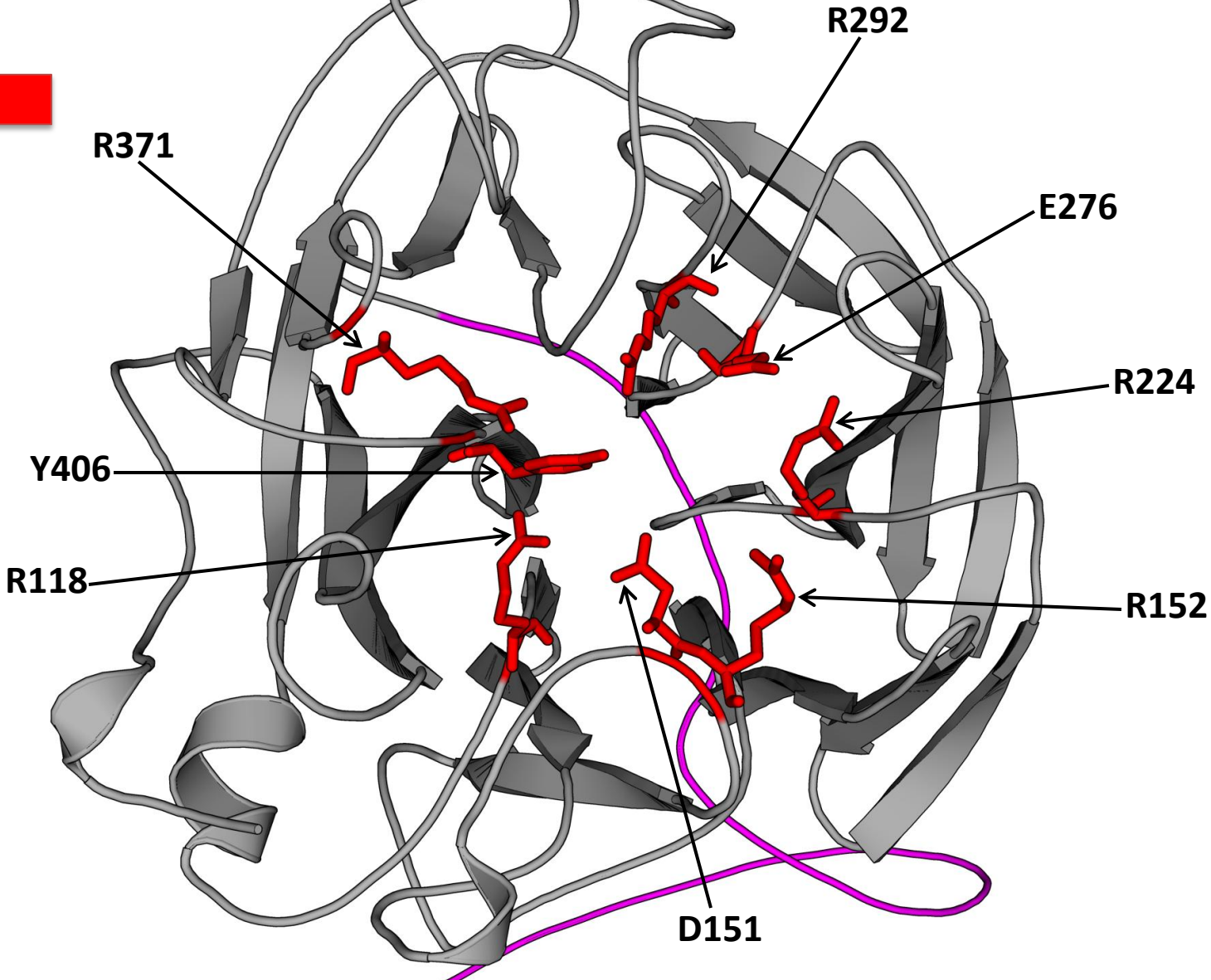
Note
Stalk, helix and cytoplasmic regions shown unstructured. This is due to lack of x-ray data. These regions are actually folded and hence a lot shorter!



HK168 NA

Directly interacting residues

Catalytic

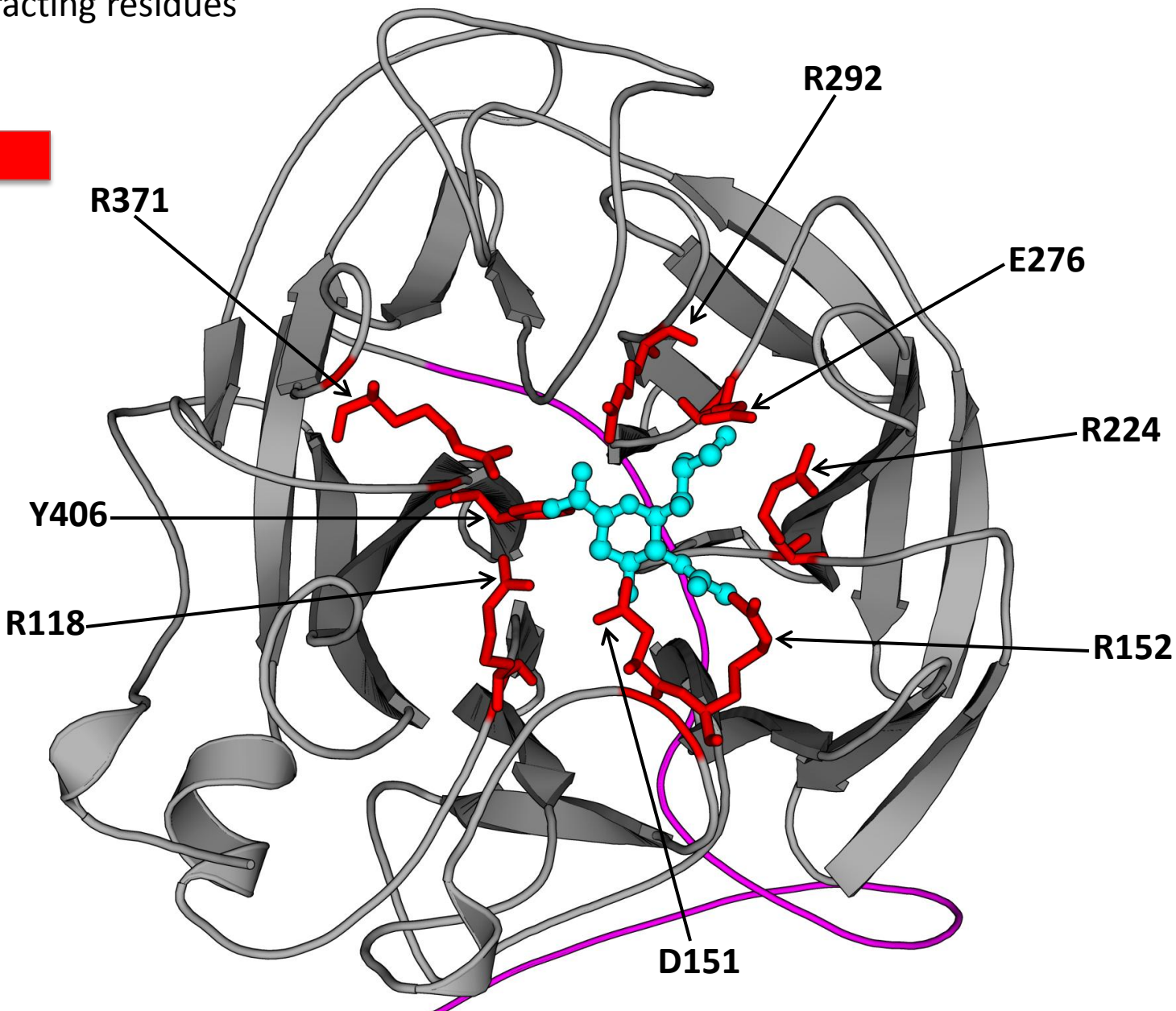


HK168 NA

Directly interacting residues

DANA

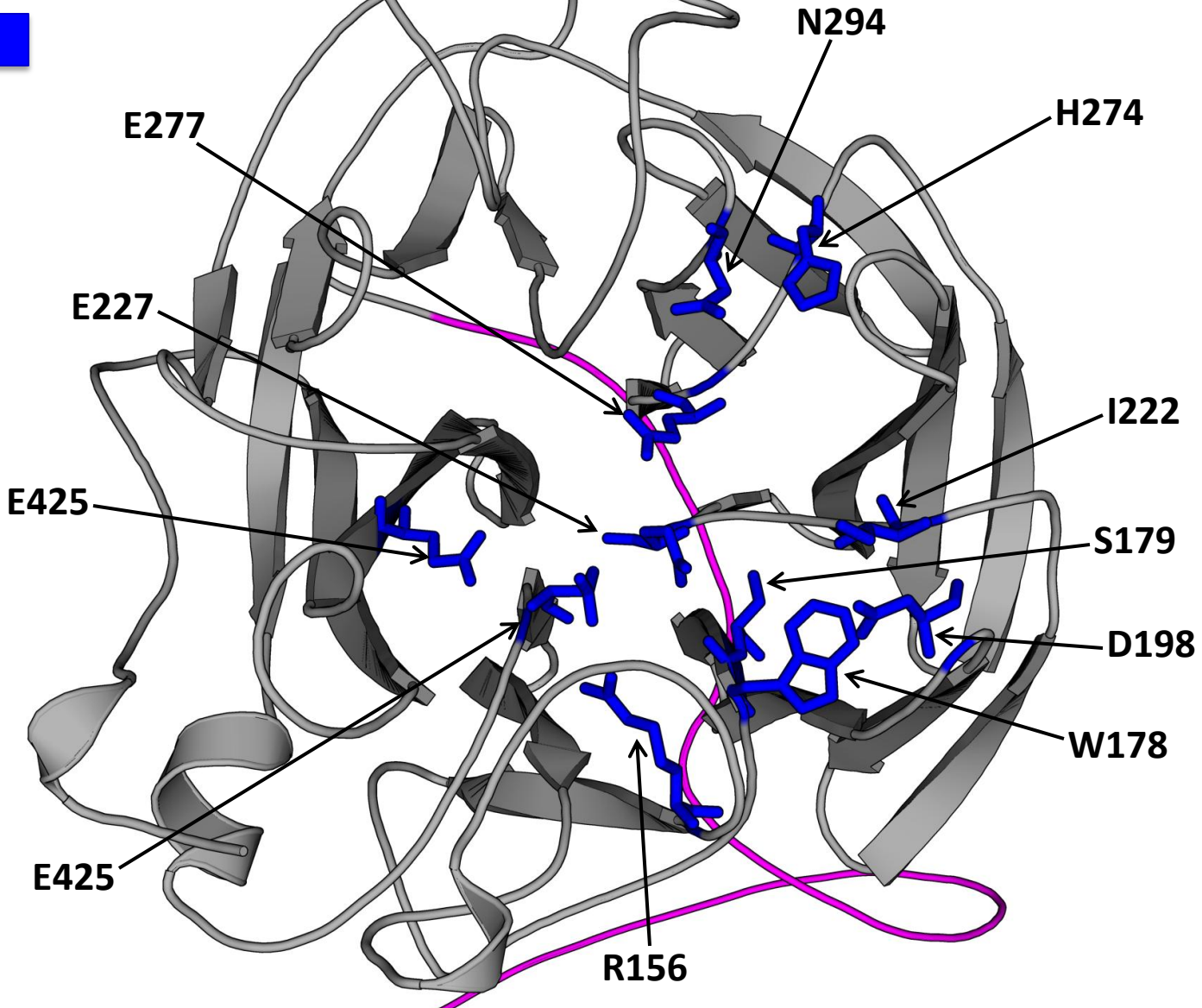
Catalytic



HK168 NA

'Framework' residues

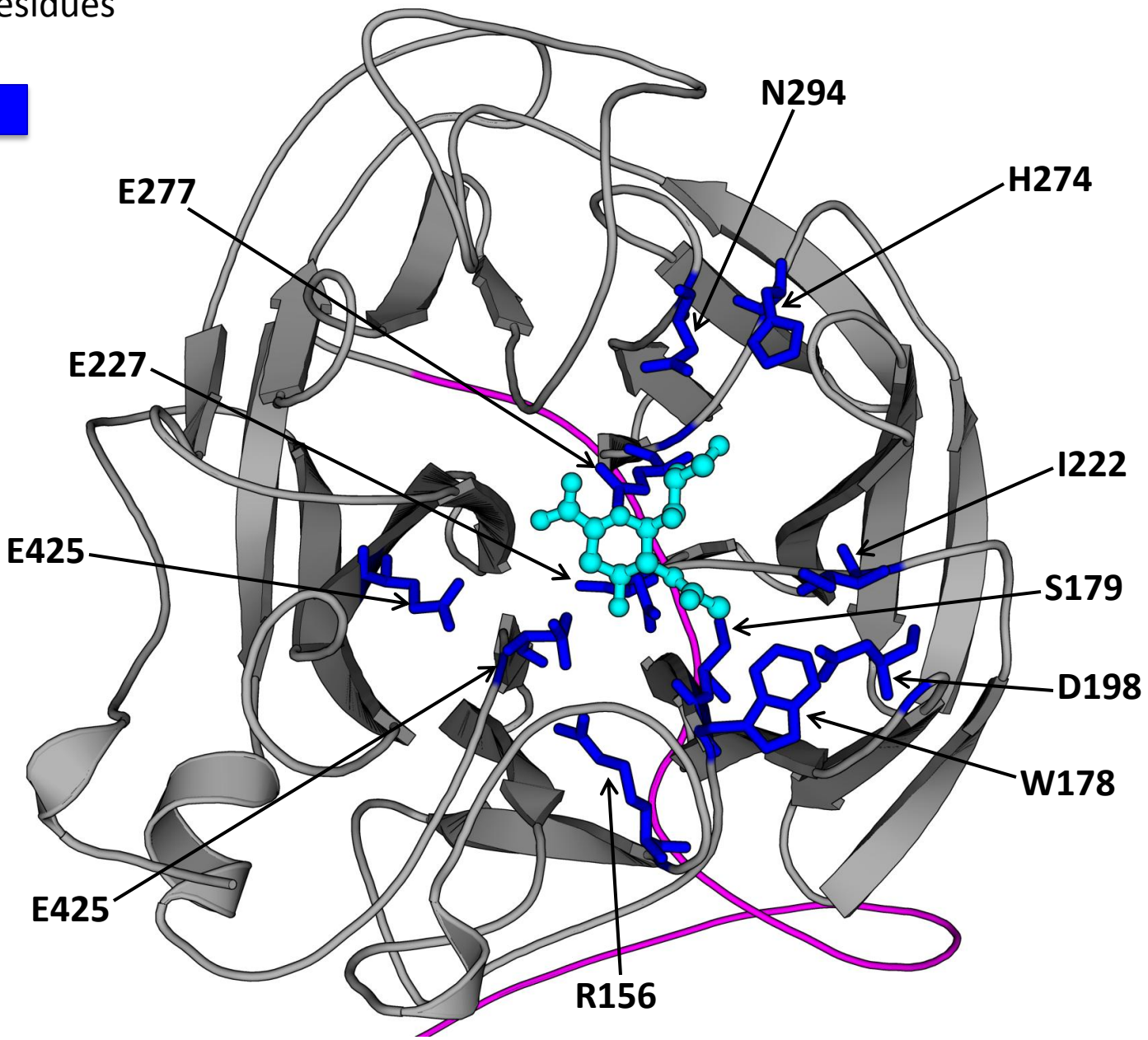
Framework



HK168 NA

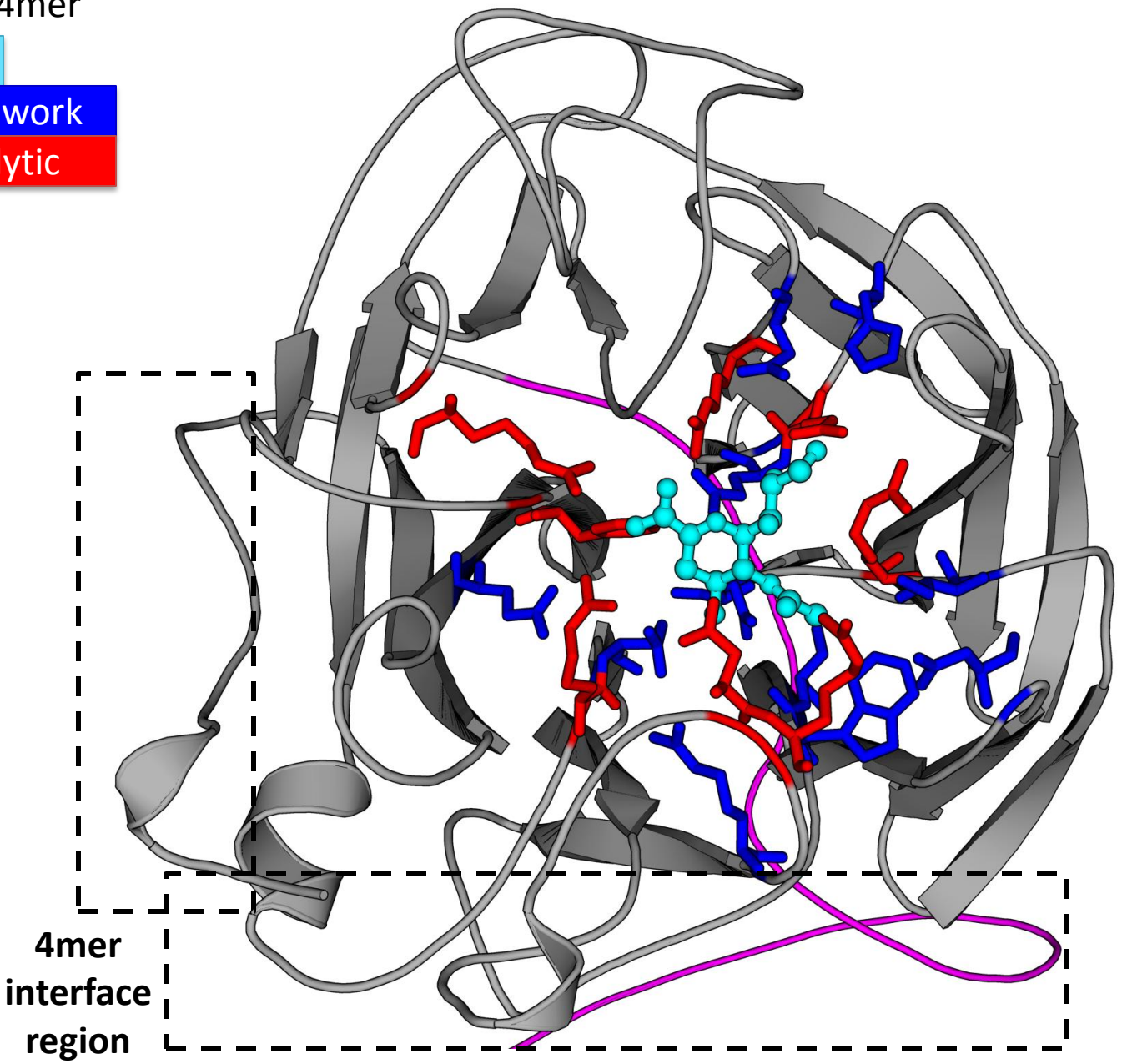
'Framework' residues

DANA
Framework



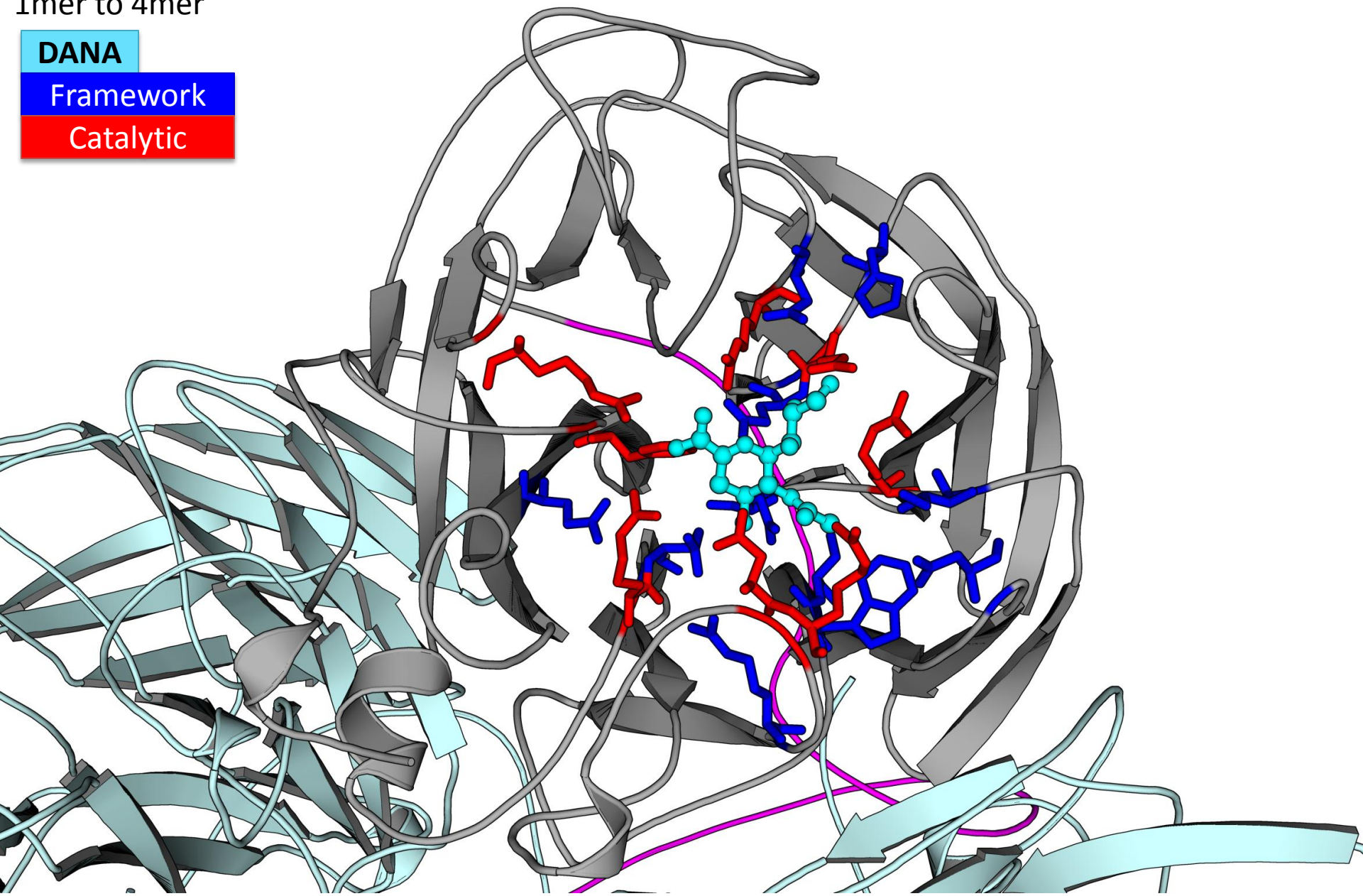
HK168 NA
1mer to 4mer

DANA
Framework
Catalytic



HK168 NA
1mer to 4mer

DANA
Framework
Catalytic



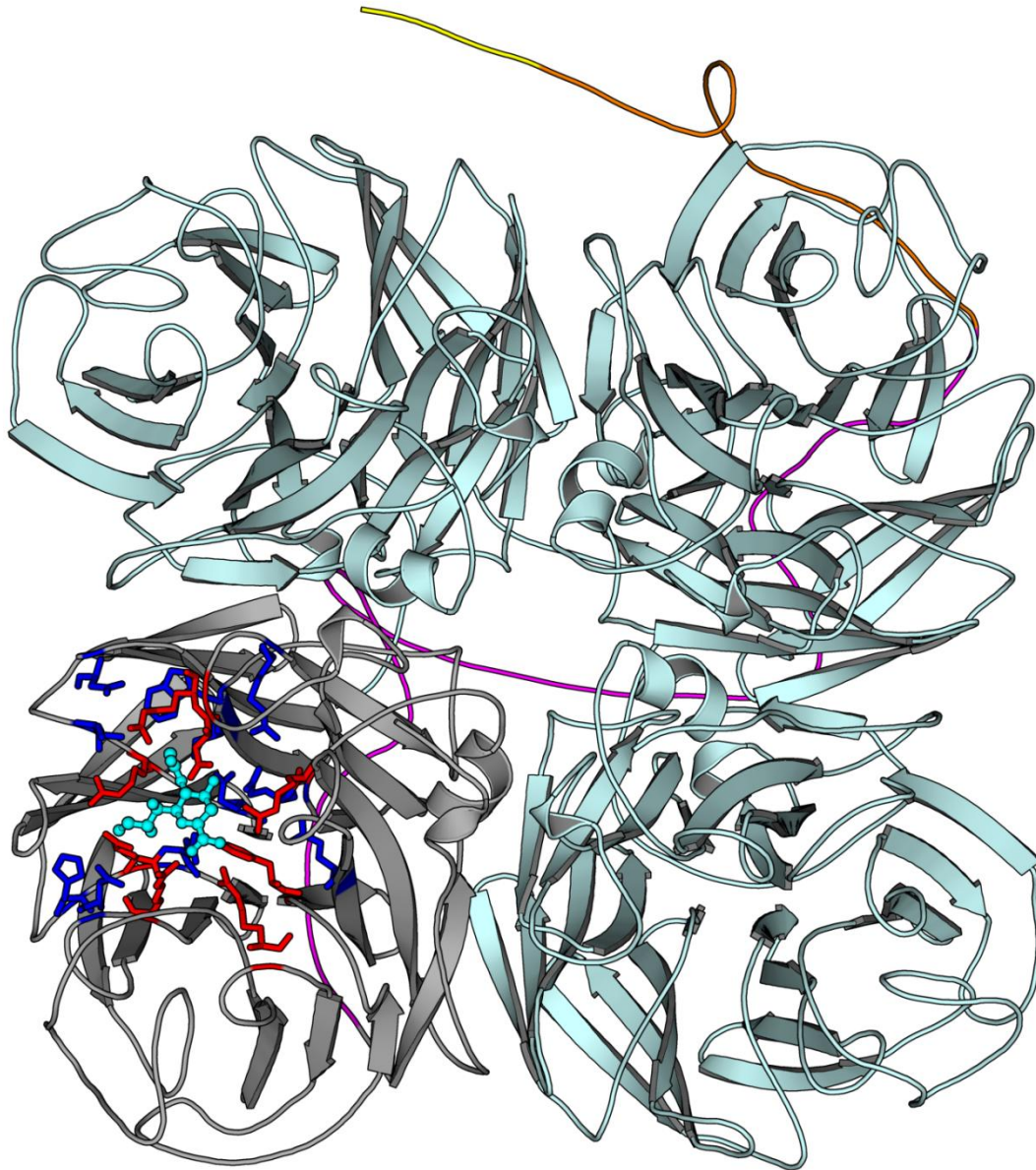
HK168 NA

4mer structure

DANA

Framework

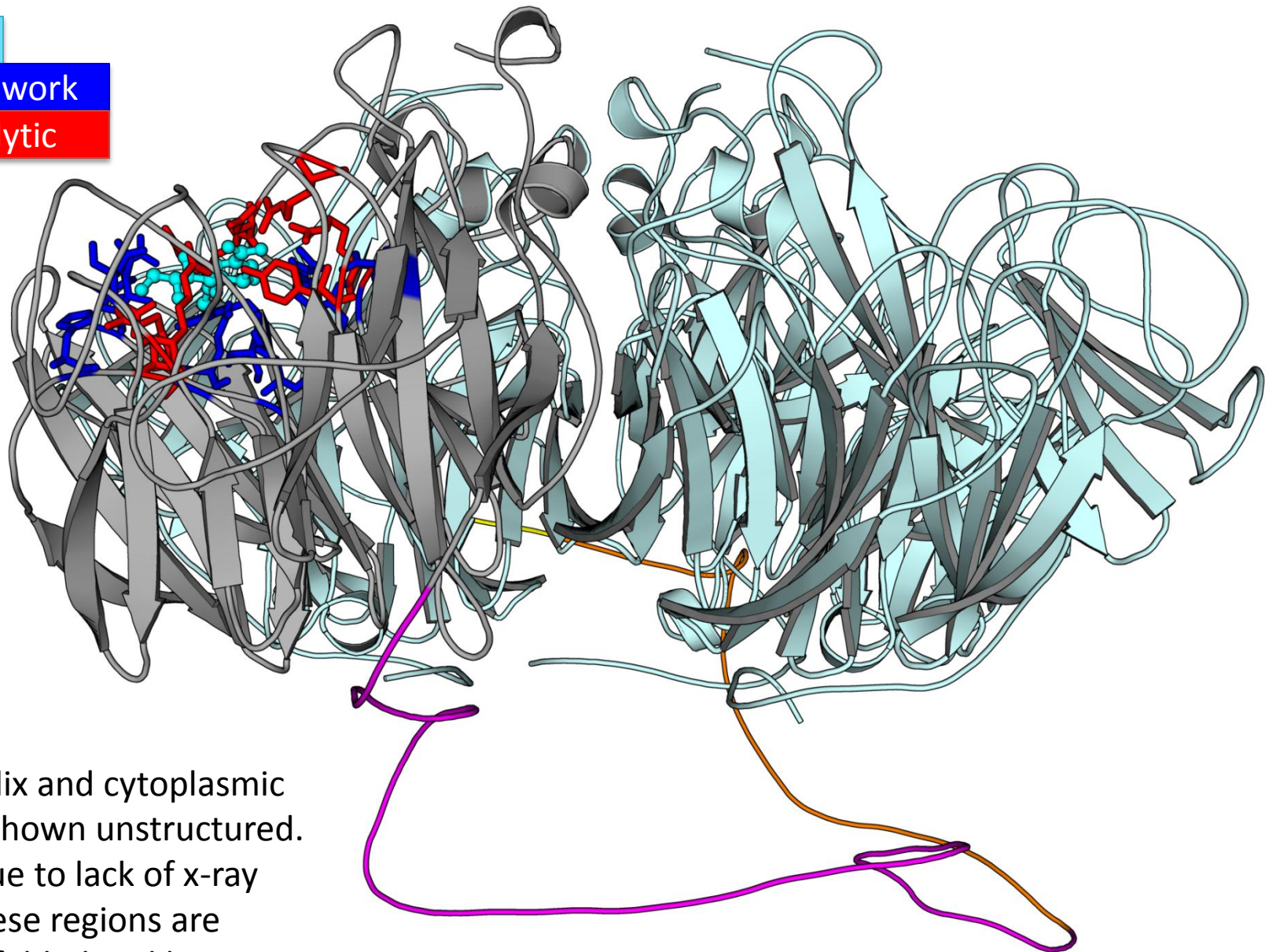
Catalytic



HK168 NA

4mer structure

DANA
Framework
Catalytic



Note

Stalk, helix and cytoplasmic regions shown unstructured. This is due to lack of x-ray data. These regions are actually folded and hence a lot shorter!